

# Welcome to ISBA21

**Kurushima channel bridge,  
at Shimanami kaido  
(Hiroshima-Ehime, Japan)**



**ISBA21**

**The 4<sup>th</sup> International School on Beam Dynamics  
and Accelerator Technology**

**Feb. 21. – 27.**

**Gateway to Accelerator Sciences for young researcher  
and graduate students in Asian.**

- **Accelerator Development**
- **Scientific study with Accelerator**

**<https://conference-indico.kek.jp/indico/event/158/>**

# ISBA20 is online school

- All lectures and events are online.
- School starts at 12:00 (Japan), 11:00 (China, Korea, Taiwan), 8:30(India).
- 5 lectures per day. Each lecture is 60 min.
- Communication session at the end.

Time	Dur.	Subject	Lecturer
12:00	0:10	Opening of the school	
12:10	1:00	Accelerator in Modern Science	M. Kuriki
13:10	0:15	Break	
13:25	1:00	Foundation of Normal conducting accelerator 1	M. Kuriki
14:25	1:00	Long Break	
15:25	1:00	Foundation of Normal conducting accelerator 2	M. Kuriki
16:25	0:15	Break	
16:40	1:00	Beam Dynamics Foundation 1	Y. Kim
17:40	0:15	Break	
17:55	1:00	Beam Dynamics Foundation 2	Y. Kim
18:55	1:00	Communication session	
19:55		Session end	



# Self introduction

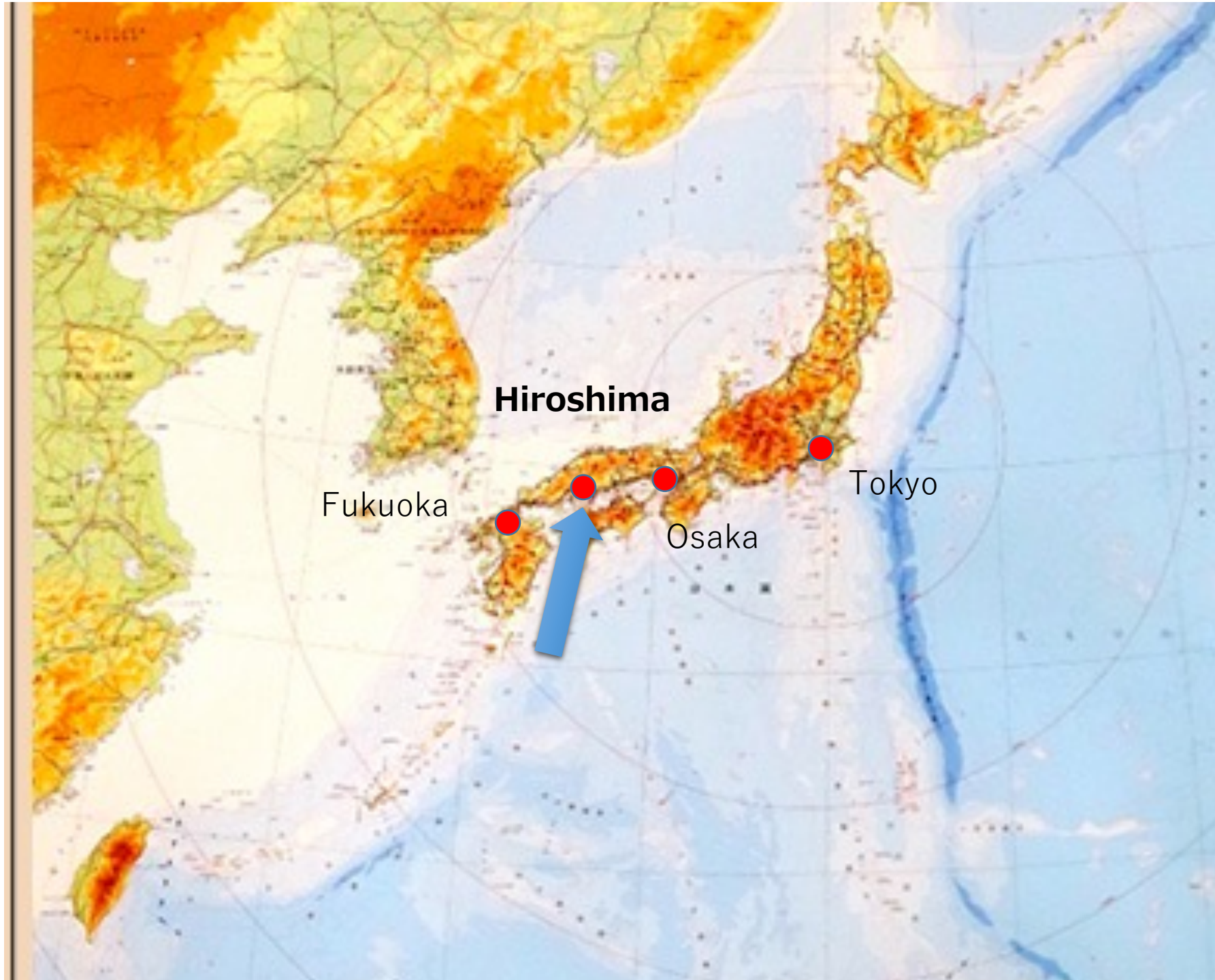
- Self introduction is requested in the communication session after the lecture on 21 and 22 Feb.
- Please find your name in the list.
- 3 min. for each, format is free.

21

1Yi Yuan
2Yang Xu
3Hiroki Tajino
4Elham Salehi
5Meng Li
6Ande Ma
7Keisuke Date
8Jia Wang
9Anna Grigorieva
10Theodore Ganesapandy
11Masahiro Atsuta
12Zachary Liptak
13Shun Konno
14Hao Sun
15Yu Tang
16Xuan Huang
17JunHa Kim
18Emre Cosgun
19Amol Sonawane
20Yao Yang
21Qixin Chen
22Lingjun Tu
23Yutao Han
24Zheng Panpan

22

25Yin Kang
26meng cai
27Wei Chen
28Guanhua Wang
29KiMoon Nam
30Yohan Lee
31Chang-Kyu Sung
32Aqsa Zahid Shaikh
33Varun Pathania
34Yaojie Zhai
35chengye xu
36Donghyun Kwak
37Yoolim Cheon
38Seung Ho Lee
39Jhih-Jia Wang
40Sung-Wei Huang
41Cheng-Yu Tsai
42SungNam Park
43Wei Yuan Chiang
44Chun-Yan Lin
45Pao-Tin Lin
46Prakash Joshi
47Guoliang Dou

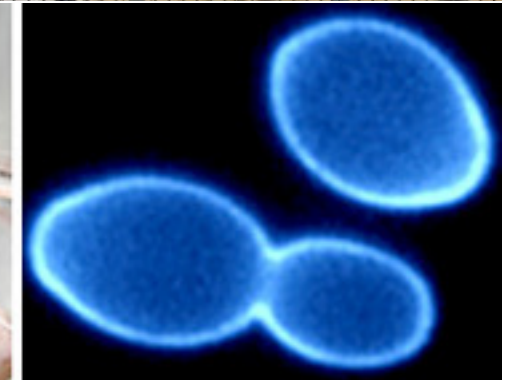


# Hiroshima University

- A National University in Hiroshima Prefecture.
- There was in Hiroshima city and moved to Higashihiroshima 20-30 years ago.
- 15000 students.
- Literature, Economics, Law, Sociology, Education, Medical, Medicine, Dentistry, Agriculture, Technology, International Development, and Science.

# Higashihiroshima (Saijo Town)

- The town is famous for Sake (rice wine) brewery.
- 8 brewery companies are concentrated in the down town.
- National Research Institute for Brewing 酒類総合研究所 is in the town.





# Group Photo

**We will take ISBA21 Group photo after my talk.**

**Stay at your seat!**





# Student session

- The session is on the last day, 27 Feb.
- We award top 5 students ISBA gold prize.



# Zoom access

- Access to ISBA Zoom meeting is controlled by Host.
- Please login to your account.
- Please show your name in ZOOM. Don't use nickname, handle name, etc. Otherwise, you will be kicked out.

# Accelerator Virtual Tour

**Superconducting Test Facility:** L-band Super conducting accelerator.

**Energy Recovery Linac:** L-band superconducting accelerator with energy recovery.

**ELPH Tohoku U. :** Electron linac and storage ring.

**Waseda U. Washio Lab. :** S-band RF electron gun.[

**Taken by GoPro MAX**

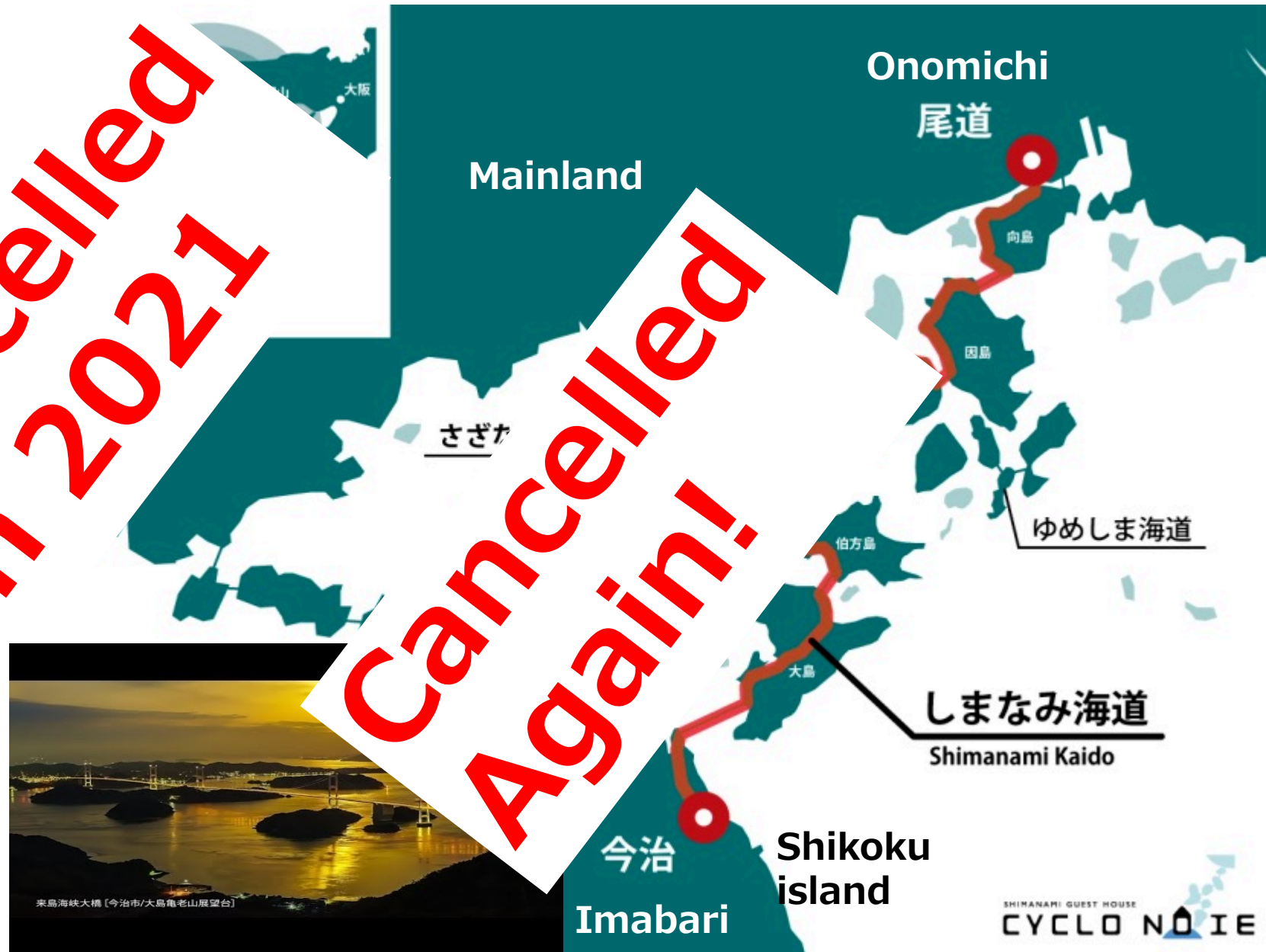


# Excursion

Shimanami kaido  
(Islands oceanic road) is  
connecting the main  
Island (Honshu) and  
Shikoku by 7 bridges.  
Geiyo islands with  
Highway, bicycle  
and walk road.

This is an ideal cycling  
road.

**We hope COVID-  
19 convergence!**



# Virtual Excursion

- Instead of the real excursion, I visited the following locations for you with **GoPro MAX**.
- On 23, 25, and 26 after the lectures.
  - Miyjima island and shrine.
  - Matsushima gulf.
  - Zuihouden tomb and Aobajo castle.
  - Tokyo down town (Asakusa town, Sumida river, Hamarikyu garden).
  - Edo castle (present emperor palace in Tokyo)
  - Matsue castle
  - Izumo shrine.