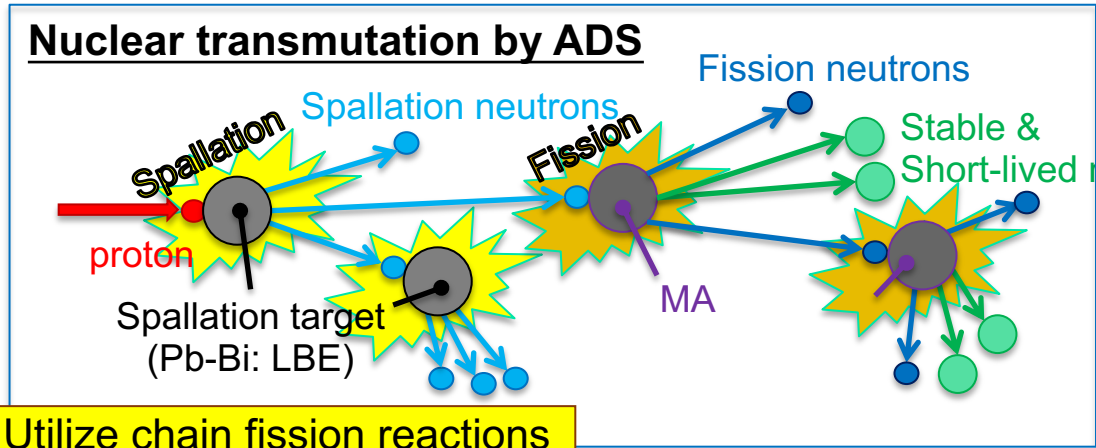
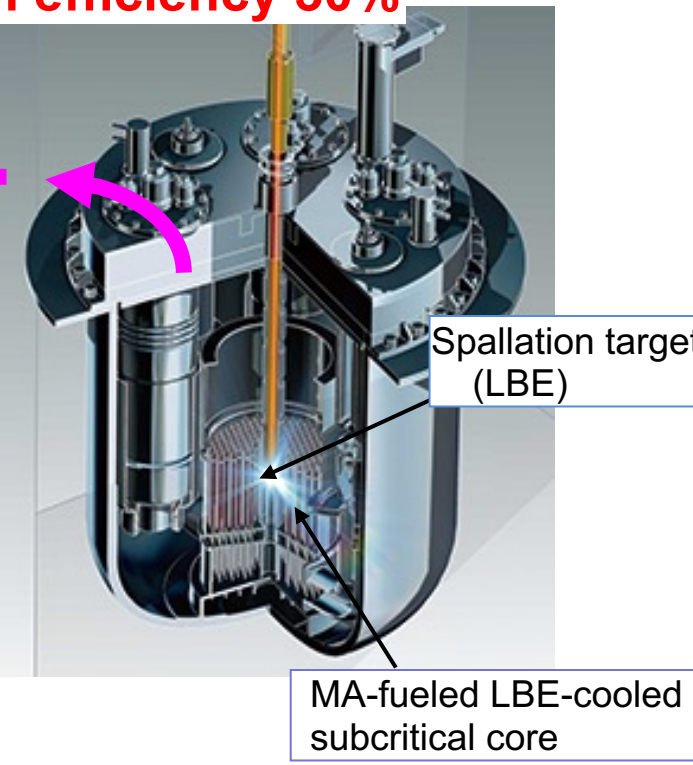
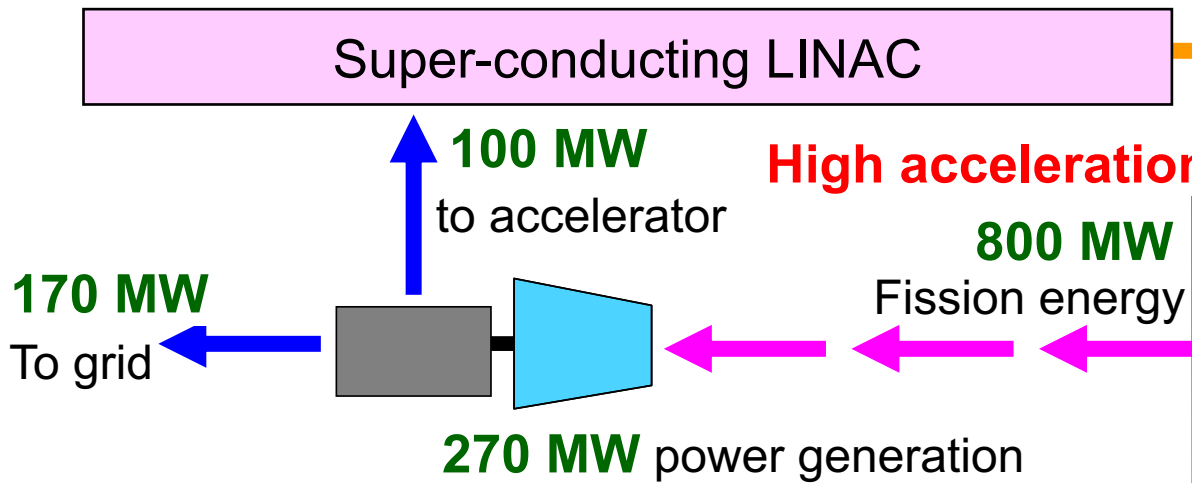




Accelerator Driven System for Efficient Transmutation of Radioactive Waste

Fujio MAEKAWA
Nuclear Transmutation Division,
J-PARC Center, Japan Atomic Energy Agency

Accelerator Driven System (ADS) for MA transmutation

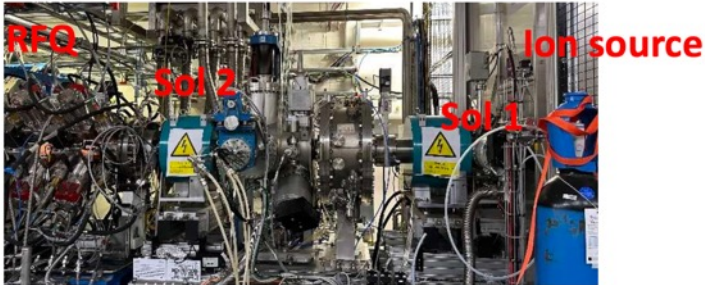


Utilize chain fission reactions in a sub-critical core

- Features of ADS:**
- Chain reactions stop when the accelerator is turned off.
 - LBE is chemically stable. → **High safety is expected.**
 - High MA-bearing fuel can be used. → MA from **10 LWRs** can be transmuted.



11/8 ESS site visit



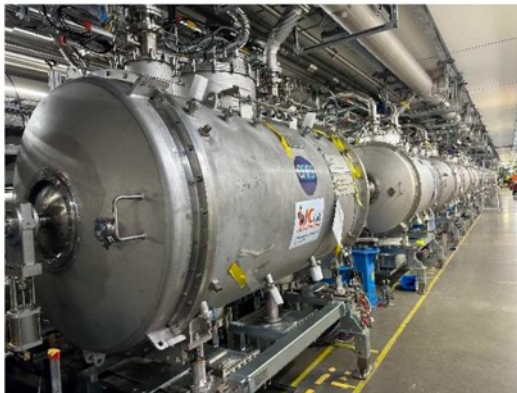
ESS LEBT



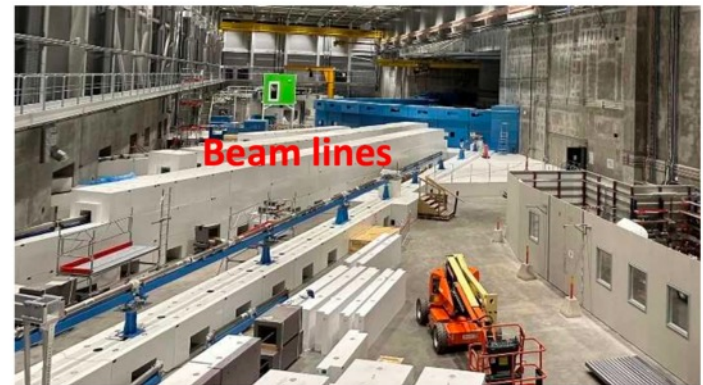
ESS CCR



Tetrode



SPOKE cryomodules



Beam lines