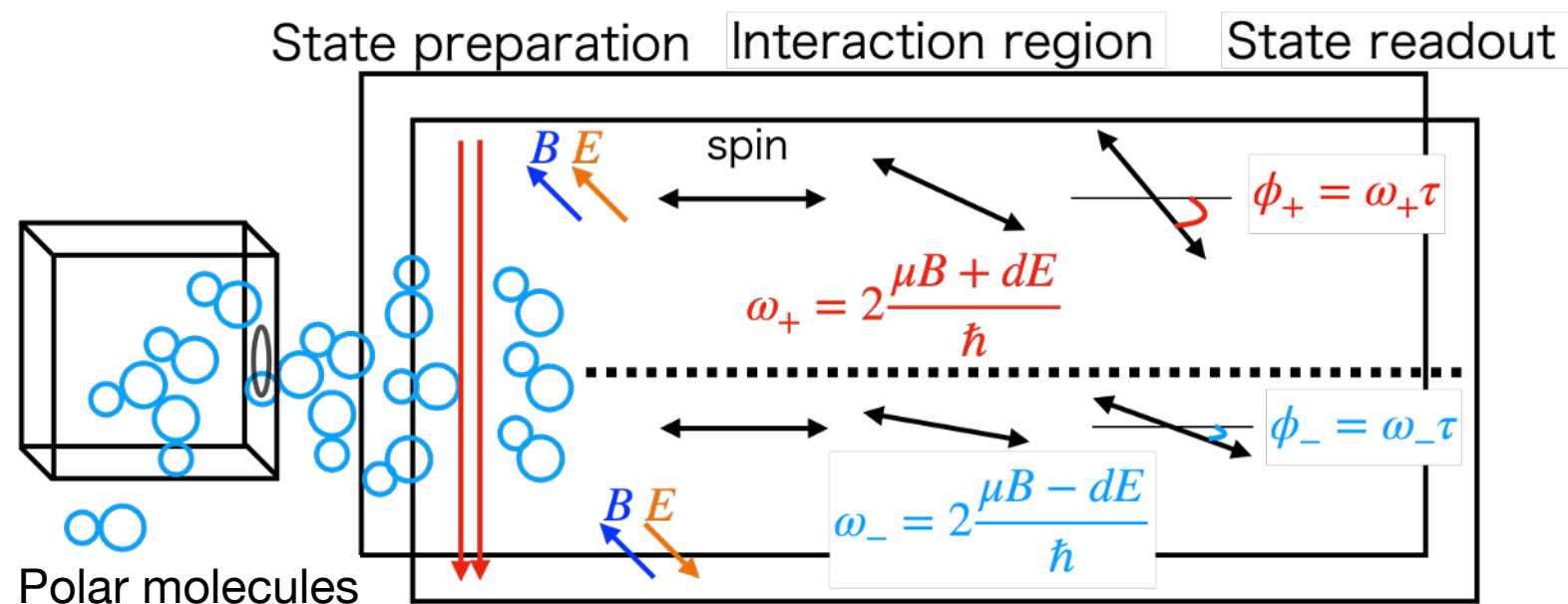


Simulation study of a centrifuge deceleration for heavy polar molecules

Takahiko Masuda (Okayama Univ.), A. Hiramoto, Y. Miyamoto, H. Uchimura, S. Uetake, K. Yoshimura, X. Wu

EDM measurement principle (beam type)



sensitivity

$$\Delta d_e \sim \frac{\hbar}{E \tau} \frac{1}{\sqrt{nT}}$$

Electric field

Spin precession time

Deceleration of molecules is the new key technique to extend the spin precession time τ .

Centrifuge decelerator

